



2 Bed End Terraced in Ramerick Gardens, Arlesey, SG15 6XZ | £279,000

Gothic

Estates.com

Estates.com



VIDEO



Key Features

- Extra large plot - south-facing
- Beautifully presented extended home
- Two DOUBLE Bedrooms
- Fabulous eat-in Kitchen
- Conservatory leading out to the garden
- Work from home cabin in the garden
- Fabulous re-fitted bathroom with window
- Truly special, unique opportunity

Description

SOLD SOLD SOLD

* Cul-de-sac location * EXTRA WIDE PLOT * Conservatory extension + work from home cabin * South-facing garden * Two double bedrooms * Large Kitchen/Dining * This will be the best modern 2 bedroom home you will see * as usual - there's a video! *

This is truly a rare opportunity - This is not just a regular 2 bedroom home - must be seen! Situated on a pie-shaped plot giving an extra-generous garden that faces south (all day sun), the home has also been extended with a substantial conservatory. The wide plot gives a bonus space to the side (with a brick barbeque) and has allowed room for a decent garden shed and a beautiful cabin - currently used as a photo studio but adaptable for other work-from-home options.

The original footprint was always one of the most generous two bedroom layouts but the wide plot and conservatory take this to another level. Both bedrooms are the full width of the house and the completely re-fitted bathroom has the all-important window.

The owners have chosen a calm, restful decor - it's just a lovely place to be. I could write about this house all day but you need to see it to appreciate - check out the photos and video then call us.

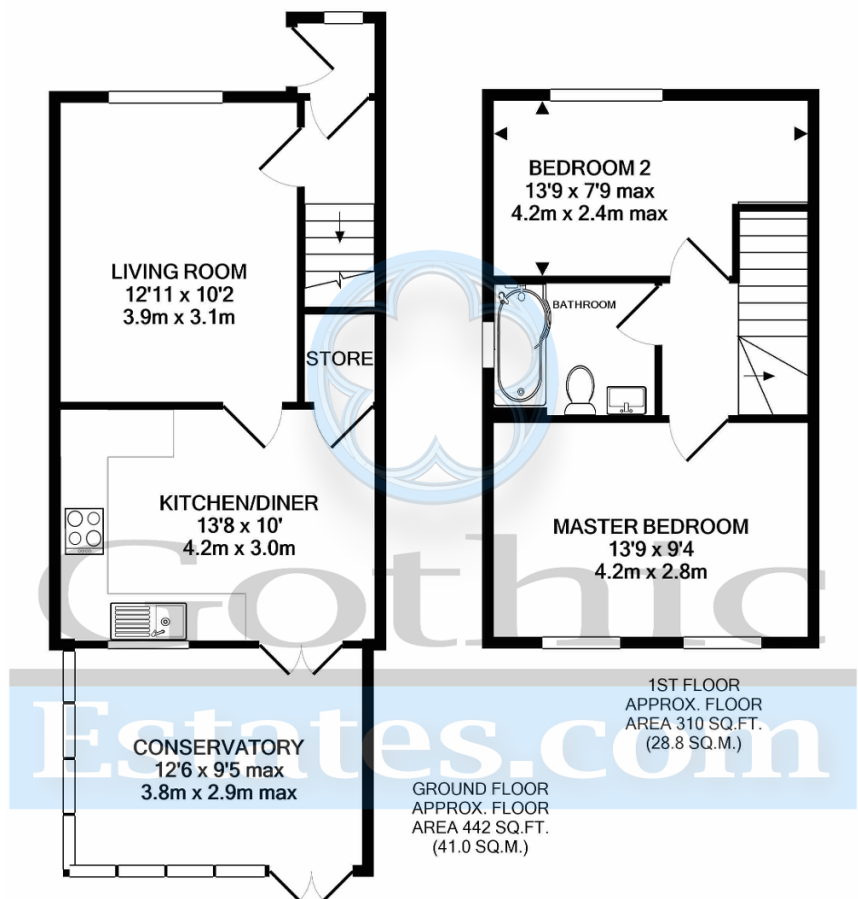
Ramerick Gardens is a two-branch cul-de-sac on the south edge of the village. It's so very close to Hitchin & Letchworth where the prices are much much higher and just 2.2 miles to Arlesey's own mainline train station into Kings Cross.

Location

Arlesey is a large village just North of the Beds/Herts border, surrounded by countryside yet within easy reach of the A507 and A1(M). The village offers a range of local shopping, pubs and food outlets and significantly a Mainline Railway station with direct travel to London Kings Cross/St Pancras in under 40 minutes. Dating back as long as the 1086 Domesday Book, there is a broad range of home styles and building eras - something for everyone! Gothic Mede Academy provides Primary education in the middle of the village, with numerous Secondary options including Etonbury Academy on the Arlesey/Stotfold border. Further facilities and shopping are available within a few miles in the larger towns of Letchworth Garden City and Hitchin to the South.







TOTAL APPROX. FLOOR AREA 752 SQ.FT. (69.9 SQ.M.)

Whilst every attempt has been made to ensure the accuracy of the floor plan contained here, measurements of doors, windows, rooms and any other items are approximate and no responsibility is taken for any error, omission, or mis-statement. This plan is for illustrative purposes only and should be used as such by any prospective purchaser. The services, systems and appliances shown have not been tested and no guarantee as to their operability or efficiency can be given

Made with Metropix ©2020

Energy Efficiency

