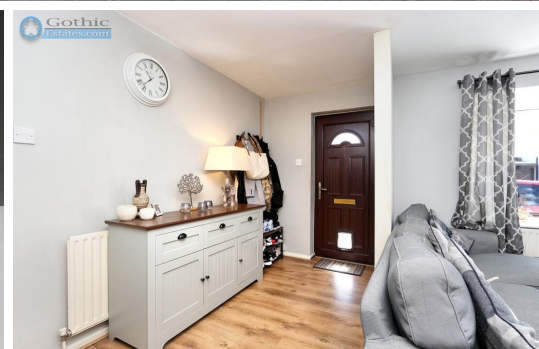




2 Bed End Terraced in Station Road, Arlesey, SG15 6RG | £235,000

Gothic

Estates.com



## Key Features

- 2 bedroom freehold house
- 2 car parking
- 15' (4.6m) main Living Room
- Generous Kitchen with lots of storage
- Two good bedrooms
- Spacious bathroom with window
- Extra storage cupboards up and down
- See WALK-THROUGH VIDEO [here...](#)



## Description

\* Freehold Starter Home with 2 CAR PARKING \* Excellent room sizes \* GREAT STORAGE \* 15' (4.6m) Reception \* Kitchen with lots of cupboards plus Pantry storage \* Generous bathroom upstairs \* Gas rad central heating & double glazing \* See WALK-THROUGH VIDEO here....

Ideal First Time Buy! A freehold cluster home in a small development of just 5 homes close to Arlesey centre and local shopping. The property has a reserved parking space in the private car park to the rear plus the owners make use of the frontage to park a second vehicle.

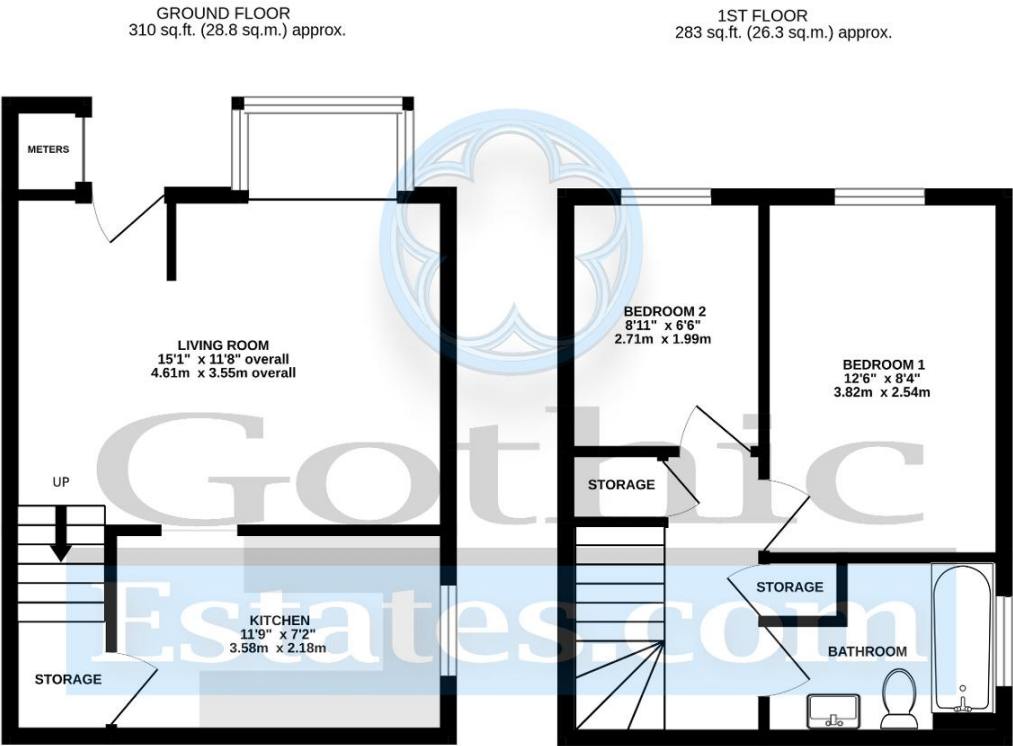
Inside there's a full width reception room which can be used as one whole room (as we have seen with a neighbouring home) or with a separate entrance area as the current owners have set up. There's some good space and excellent storage in this home with the kitchen larger than many starter homes, as is the bathroom. There's an excellent double bedroom plus a decent bedroom 2 (not just a box room). Built-in storage is great here with an outside cupboard, a large understairs cupboard in the kitchen, whilst upstairs there's a large airing cupboard plus a whole extra built-in cupboard on the landing.

Nearest local shops, restaurant, take outs: 2 mins walk  
Arlesey mainline station 1.6 miles  
Gothic Mede Academy Lower School 0.5 miles 9 mins walk  
Letchworth Garden City 3.4 miles  
Hitchin Centre 4.7 miles  
Council tax band B  
EPC commissioned

## Location

Arlesey is a large, growing village just North of the Beds/Herts border, surrounded by countryside yet within easy reach of the A507 and A1(M). The village offers a range of local shopping, pubs and food outlets and significantly a Mainline Railway station with direct travel to London St. Pancras in under 40 minutes. Dating back as long as the 1086 Domesday Book, there is a broad range of home styles and building eras - something for everyone! Gothic Mede Academy provides Primary education in the middle of the village, with numerous Secondary options including Etonbury Academy on the Arlesey/Stotfold border. Further facilities and shopping are available within a few miles in the larger towns of Letchworth Garden City and Hitchin to the South.





TOTAL FLOOR AREA : 593 sq.ft. (55.1 sq.m.) approx.

Whilst every attempt has been made to ensure the accuracy of the floorplan contained here, measurements of doors, windows, rooms and any other items are approximate and no responsibility is taken for any error, omission or mis-statement. This plan is for illustrative purposes only and should be used as such by any prospective purchaser. The services, systems and appliances shown have not been tested and no guarantee as to their operability or efficiency can be given.

Made with Metroix 62023

Energy Efficiency

