

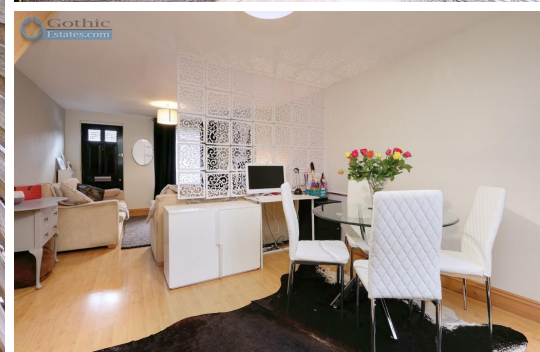


2 Bed Terraced in London Row, Arlesey, SG15 6RX | £1

Gothic

Estates.com

Estates.com



Key Features

- Two/Three bedroom cottage with EN SUITE!
- CHAIN FREE SALE
- Quiet no-through road near countryside
- Approx 140' garden with outbuildings
- 23' through Lounge/Dining Room
- Stylish Kitchen with vaulted ceiling
- Two bathrooms - bath down, shower up
- Small 3rd bed = ideal office/workspace

Description

SOLD SOLD SOLD

* CHAIN FREE SALE* Two/Three Bedroom Character Cottage * Master with EN SUITE * Huge 23' x 12' Reception * 140' garden with outbuildings * Two bathrooms - shower up, bath down * See WALK-THROUGH VIDEO here....

Charming cottage which has been extended and further amended to create a lovely homely environment, both inside and outside in the generous garden.

Upstairs, the master bedroom is a great size and includes an en suite shower room - truly rare in this price band (there's also another bathroom downstairs). As well as a spare Bedroom 2, there's also a smaller Bedroom 3 - ideal as kid's room (as now) or home office.

Downstairs is very roomy with a 23 x 12 Living/Dining Room, leading through to a nicely fitted Kitchen with a dramatic part-vaulted skylight ceiling. The Kitchen includes built-in oven & 5 burner gas hob as well as slim dishwasher space.

Garden has had a great deal of design and construction input, separated into multiple unique areas - see photos! Beyond the formal gardens of lawn, seating and planting is a further section with various outbuildings including a sizeable cabin.

Nearest mainline stations:

Arlesey 1.8 miles

Letchworth 3.2 miles

Hitchin 4.4miles

Location

Arlesey is a large village just North of the Beds/Herts border, surrounded by countryside yet within easy reach of the A507 and A1(M). The village offers a range of local shopping, pubs and food outlets and significantly a Mainline Railway station with direct travel to London St. Pancras in under 40 minutes. Dating back as long as the 1086 Domesday Book, there is a broad range of home styles and building eras - something for everyone! Gothic Mede Academy provides Primary education in the middle of the village, with numerous Secondary options including Etonbury Academy on the Arlesey/Stotfold border. Further facilities and shopping are available within a few miles in the larger towns of Letchworth Garden City and Hitchin to the South.



Ground Floor

Living/Dining Room - 22' 11" x 12' 2" (7m x 3.71m)

Kitchen - 12' 7" x 7' 10" (3.84m x 2.41m)

Bathroom - 7' 1" x 6' 3" (2.17m x 1.93m)

First Floor

First Floor Landing -

Master Bedroom - 12' 2" x 10' 3" (3.71m x 3.14m) Max measurements

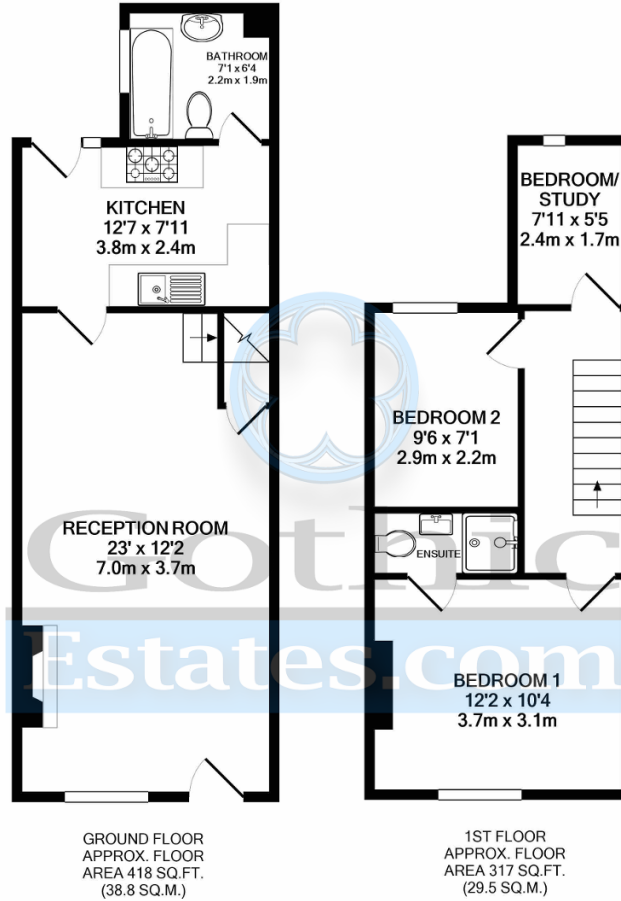
En Suite -

Bedroom 2 - 9' 6" x 7' 1" (2.91m x 2.16m)

Bedroom 3/Study - 7' 10" x 5' 4" (2.41m x 1.65m)







Whilst every attempt has been made to ensure the accuracy of the floor plan contained here, measurements of doors, windows, rooms and any other items are approximate and no responsibility is taken for any error, omission, or mis-statement. This plan is for illustrative purposes only and should be used as such by any prospective purchaser. The services, systems and appliances shown have not been tested and no guarantee as to their operability or efficiency can be given
Made with Metropix ©2020

Energy Efficiency

