



2 Bed Terraced in High Street, Arlesey, SG15 6SL | £1

Gothic

Estates.com

Estates.com



### Key Features

- 2/3 bedroom cottage with DOUBLE GARAGE!
- Deceptive - not just a terraced cottage
- 60'+ immaculate garden + outbuilding
- MASSIVE 30 x 10 garage electric door
- Re-fit kitchen - granite surfaces
- Great decor, upstairs re-fit bathroom
- Private parking in addition to garage
- Bonus attic space



## Description

SOLD SOLD SOLD

\* NO CHAIN \* 2/3 bedroom Victorian home with DOUBLE GARAGE \* Truly DECEPTIVE - not just a cottage \* Great decor - upstairs bathroom \* 60'+ LANDSCAPED garden \* 30 x 10 tandem garage + private parking \* 2 bedrooms plus easily accessed BONUS ATTIC space \* See WALK-THROUGH VIDEO here....

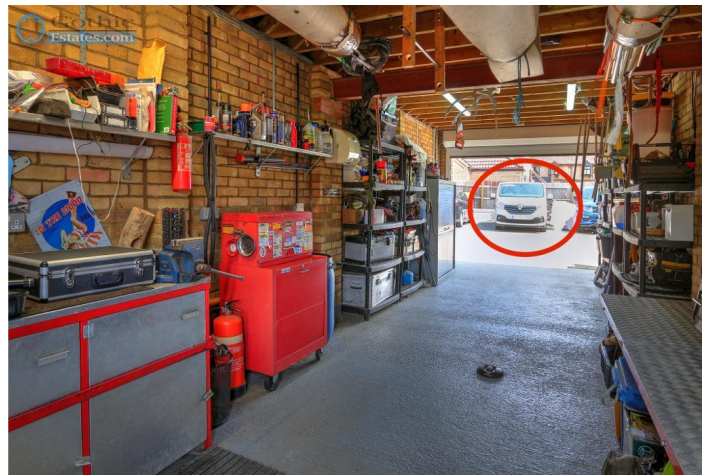
Rarely was there a more deceptive property, not least in view of the private parking and double length garage at the rear. The garden too has had so much work to produce a ready to enjoy, landscaped environment leading straight into the oversized garage and also with the opportunity to develop the outhouse into a garden room (as the neighbours have done with theirs). Inside the features continue - bathroom upstairs and contemporary re-fitted, kitchen re-fitted including granite worktops and the attic space with it's own staircase and skylight making it a bonus space to the house's accommodation.

Seems expensive for a 2 bedroom house? You have to come and look to see what's here. Several vehicles? Home mechanic? Someone with projects? Come and look. AVAILABLE CHAIN FREE.

Arlesey mainline train station (direct London St Pancras 40 mins) 1.3 miles: about 23 - 25 minutes walk  
Local shops 0.2 miles: 3 - 4 mins walk  
Letchworth Garden City (centre and station) 3.4 miles: 8 mins by car  
Hitchin approx 4.7 miles: 12 mins by car

## Location

Arlesey is a large village just North of the Beds/Herts border, surrounded by countryside yet within easy reach of the A507 and A1(M). The village offers a range of local shopping, pubs and food outlets and significantly a Mainline Railway station with direct travel to London St. Pancras in under 40 minutes. Dating back as long as the 1086 Domesday Book, there is a broad range of home styles and building eras - something for everyone! Gothic Mede Academy provides Primary education in the middle of the village, with numerous Secondary options including Etonbury Academy on the Arlesey/Stotfold border. Further facilities and shopping are available within a few miles in the larger towns of Letchworth Garden City and Hitchin to the South.

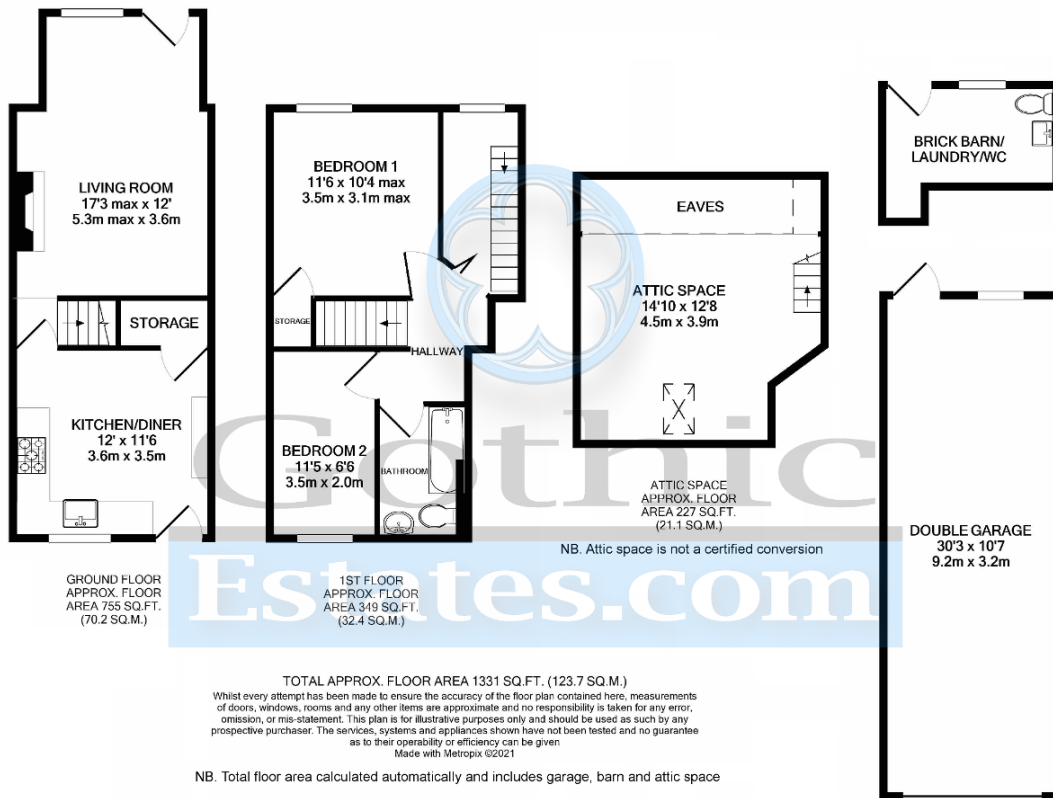












Energy Efficiency

