



1 Bed End Terraced in High Street, Arlesey, SG15 6SZ | £229,000

Gothic

Estates.com

Estates.com



VIDEO



Key Features

- VERY COOL 1 bedroom cottage
- Amazing LUXURY interior
- Incredible range of top-end appliances
- Stylish white/grey decor theme
- High-gloss kitchen cabinetry
- Opulent hotel-style wet room
- Enclosed rear garden
- See WALK-THROUGH VIDEO here...

Description

* CHAIN FREE * VERY COOL 1 bedroom cottage * Like a 2 floor Luxury Hotel Suite! * Stylish white decor * AMAZING kitchen with Smeg & AEG appliances * WOW Wet room shower * Back garden with potential for parking * 0.9 mile WALK TO STATION * See WALK-THROUGH VIDEO here...

Do you deserve luxury living? It puts us in mind of a luxury two-floor hotel suite - yet it is a freehold house with a back garden. Comprising a Living Room to the front with a compact Dining Area, a spacious Kitchen with the most amazing range of fitted appliances not often seen in a home 2 or 3 times the price, a fabulous hotel-style Wet Room and a generous double bedroom on the upper floor. Finished in immaculate white and grey theme with plantation blinds to the main windows.

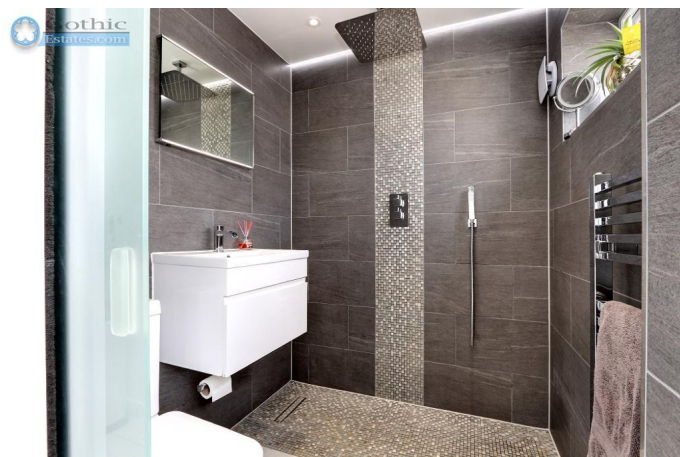
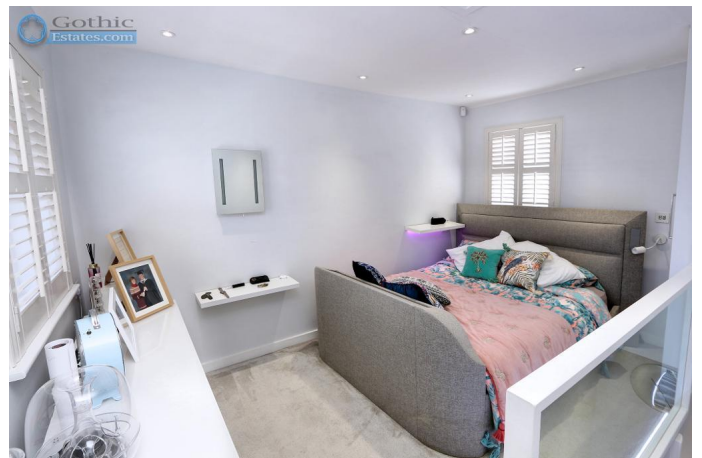
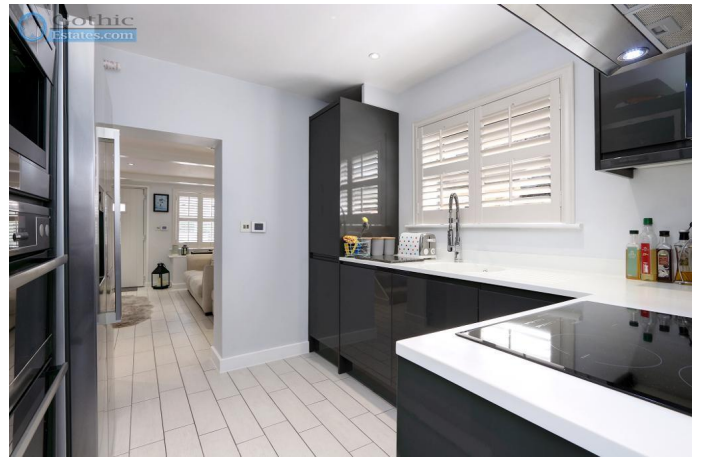
The property is the end of a short row of three homes and has a separate, enclosed garden right out the back. Moving the garden fence slightly would allow for parking on the plot. Comprehensive range of high-end appliances included: Smeg American style fridge/freezer with ice maker/dispenser and quick access front hatch, appliance tower with AEG double oven, AEG integrated coffee maker & AEG microwave, AEG induction hob, integrated dishwasher and washer/dryer. Combi boiler is Worcester Bosch serving the gas central heating.

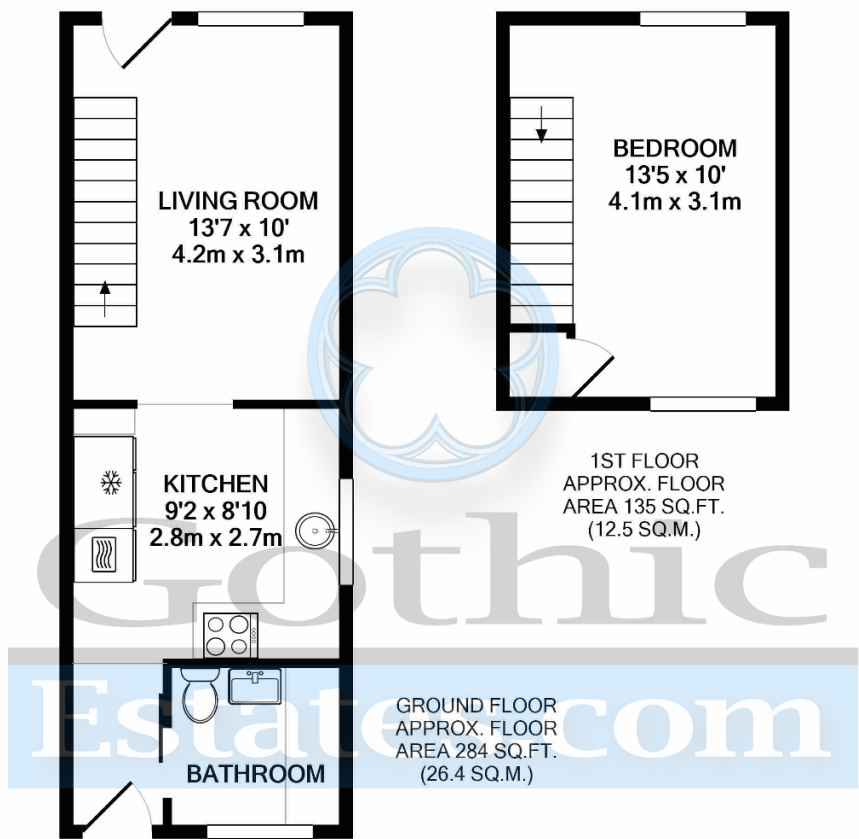
Council tax band B

Location

Arlesey is a large village just North of the Beds/Herts border, surrounded by countryside yet within easy reach of the A507 and A1(M). The village offers a range of local shopping, pubs and food outlets and significantly a Mainline Railway station with direct travel to London St. Pancras in under 40 minutes. Dating back as long as the 1086 Domesday Book, there is a broad range of home styles and building eras - something for everyone! Gothic Mede Academy provides Primary education in the middle of the village, with numerous Secondary options including Etonbury Academy on the Arlesey/Stotfold border. Further facilities and shopping are available within a few miles in the larger towns of Letchworth Garden City and Hitchin to the South.







TOTAL APPROX. FLOOR AREA 419 SQ.FT. (38.9 SQ.M.)

Whilst every attempt has been made to ensure the accuracy of the floor plan contained here, measurements of doors, windows, rooms and any other items are approximate and no responsibility is taken for any error, omission, or mis-statement. This plan is for illustrative purposes only and should be used as such by any prospective purchaser. The services, systems and appliances shown have not been tested and no guarantee as to their operability or efficiency can be given
Made with Metronix ©2020

Energy Efficiency

