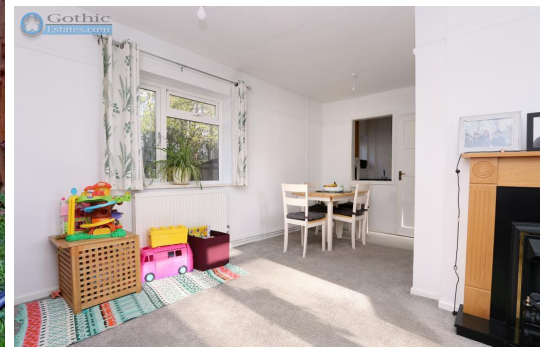
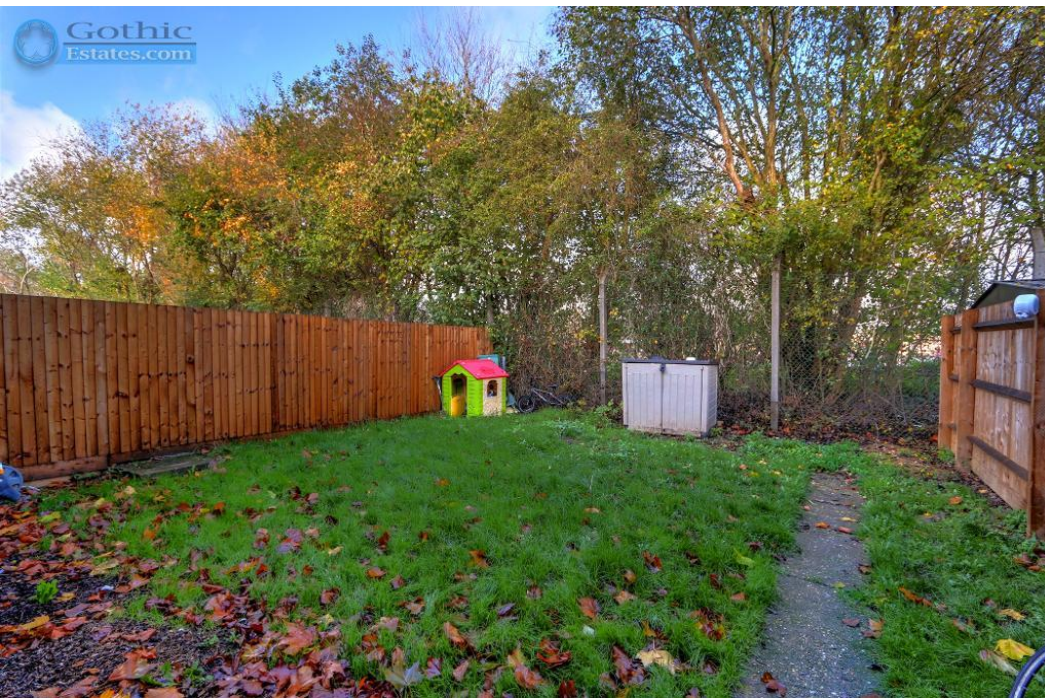




3 Bed Terraced in Tedder Avenue, Henlow Camp, SG16 6HN | £299,500

Gothic

Estates.com



Key Features

- **** CHAIN FREE ****
- Three bedroom family home
- Reserved parking to the front
- Gas central heating and double glazing
- Excellent bedrooms sizes
- Bathroom with separate WC
- Rear garden backs onto school field
- Fitted Kitchen plus separate Utility

Description

* CHAIN FREE * Quick move available * THREE BEDROOM family-size home * Rear garden backing onto lower school field * PRIVATE PARKING right outside * EXCELLENT BEDROOM SIZES * Fitted kitchen + separate utility * Close to country walks * See WALK-THROUGH VIDEO here....

Terrific CHAIN FREE opportunity, ideal for First Time Buyer. Henlow Camp/Lower Stondon position just 10 mins drive to Hitchin but so much more affordable. Local shopping including petrol station, vets and pub just minutes walk plus lower school right next door. House offers excellent bedroom sizes - two doubles + generous single, all have built-in wardrobe storage. Downstairs with L-shape (5.6m x 5m) Lounge/Diner, kitchen with space for dishwasher and separate utility room - great for the family's coats and boots. Enclosed rear garden backs onto lower school grounds so not overlooked from the rear.

Derwent Lower School 2 mins walk

Local shopping approx 6 mins walk

Arlesey mainline station (London St Pancras direct 39 mins) 2.3 miles 5 mins drive

Hitchin centre approx 4.6 miles 10 mins drive

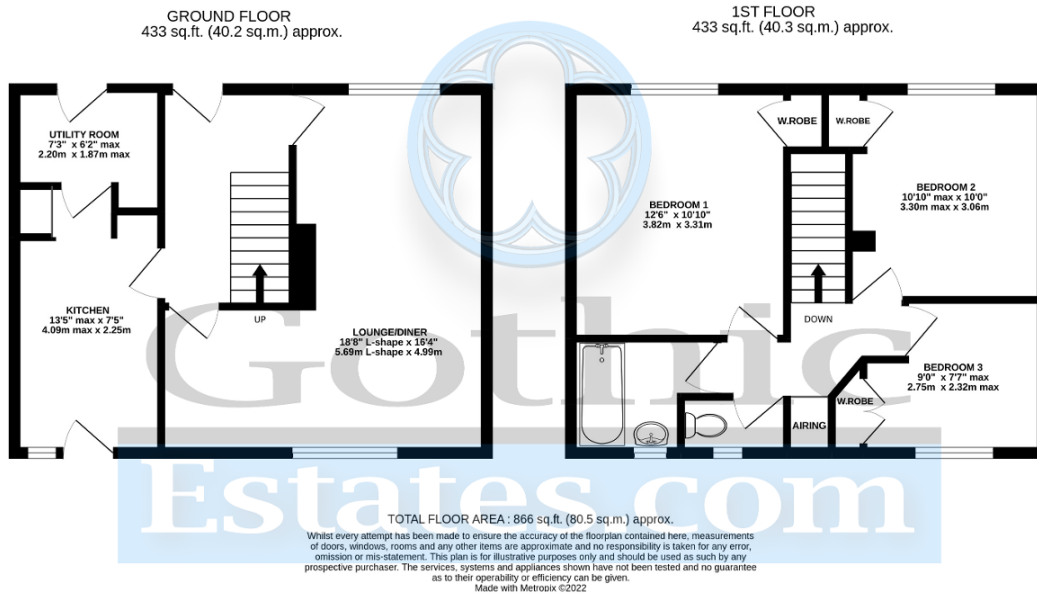
Local service charge (eg. street maintenance, grass cutting, lighting) approx £21.50 monthly

Council tax band C

Location

Lower Stondon/Henlow Camp in the parish of Henlow is a village in Central Bedfordshire close to the Hertfordshire border and approximately 4 miles north of Hitchin, accessible by car in about 10 mins. There's a range of local facilities including a petrol station, pub, vets, food outlets and convenience stores clustered either side of the Bedford to Hitchin Road, as well as two lower schools and a nearby golf club. The nearest train station is at Church End, Arlesey approximately 2.5 miles from the Bedford Road with further shopping and facilities available in Hitchin to the south and Shefford to the north.





Energy Efficiency

