



4 Bed Terraced in St Johns Road, Arlesey, SG15 6ST | £375,000

Gothic

Estates.com

Estates.com



Key Features

- Deceptively spacious family home
- Four bedrooms, two bathrooms + cloaks WC
- Large top floor Master Suite
- Excellent bedroom sizes all round
- Bathroom, Ensuite & Cloaks ALL RE-FITTED
- Kitchen/Diner RE-FITTED + all appliances
- Living Room with French doors to garden
- GARAGE + parking in front

Description

* SELLER BUYING VACANT * Deceptively roomy 4 BED + ENSUITE * GARAGE & parking * Whole top floor HUGE MASTER SUITE * Kitchen, both bathrooms & cloakroom ALL REFITTED * All integrated appliances * Generous bedroom sizes * Living Room with French doors to garden * See WALK-THROUGH VIDEO here...

Sellers have already agreed to buy a vacant property so we're all set to go!

Room for all the family and in terrific decorative order with the Kitchen, Bathroom, Ensuite and Cloakroom all re-fitted with a stylish modern theme. The property is situated on a no-through road close to the middle of the village, handy for the lower school and local shopping just minutes away. There's a garage with parking in front and a simply laid out lawned garden with a decking area and gated access to the garage (which you can also access via the front).

The accommodation is truly deceptive with three generous bedrooms plus a bathroom on the first floor, then a magnificent Master Suite with a dressing area, eaves storage and Ensuite Shower Room on the top floor. Downstairs there's a Kitchen/Diner with refitted high-gloss white units (all integrated appliances including fridge/freezer, dishwasher, washer, oven, hob, extractor), the Living Room overlooking the garden as well as a guest cloakroom WC.

Nearest local shops 0.4 miles 6 mins walk

Lower school Gothic Mede Academy 0.4 miles 7 mins walk

Arlesey Mainline station (direct London St Pancras 39 mins) 1.5 miles 5 mins by car

Letchworth Garden City (centre and alternative mainline station) 3.6 miles 9 mins by car

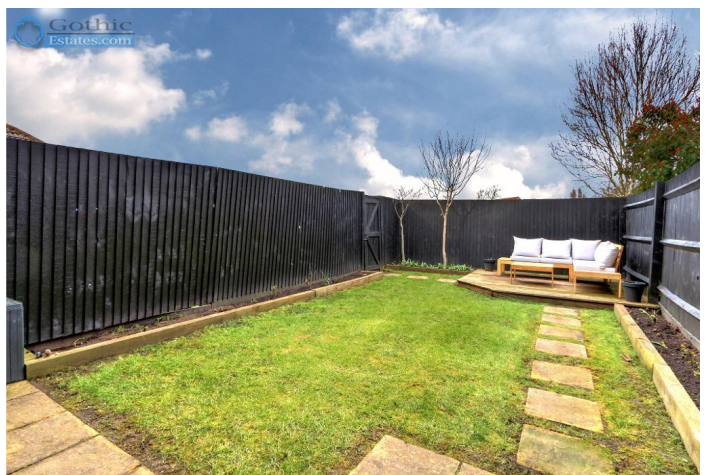
Hitchin centre 5.0 miles 13 mins by car

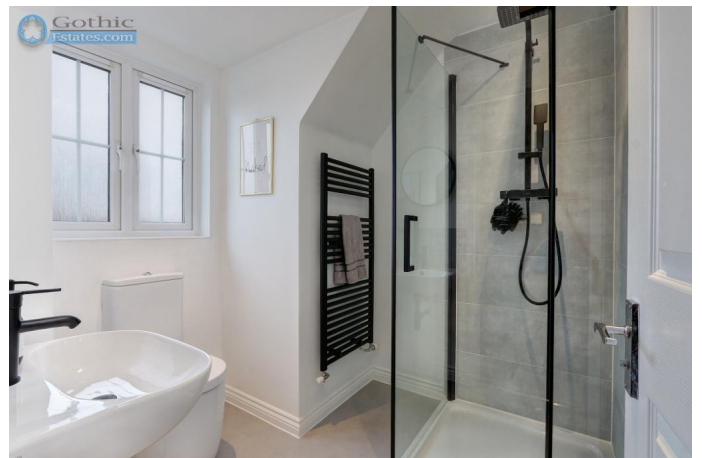
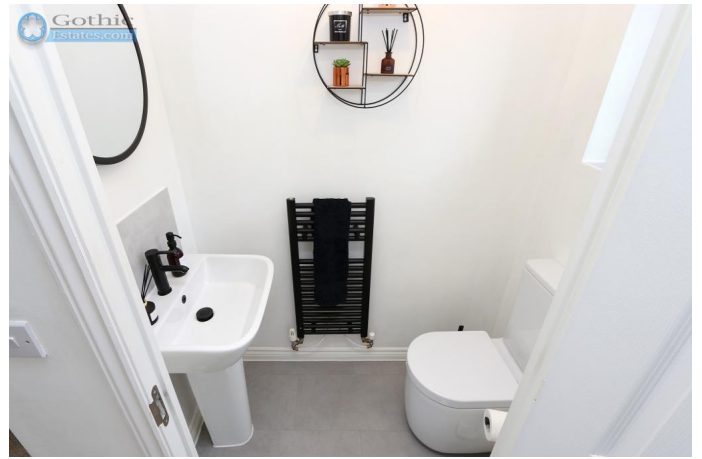
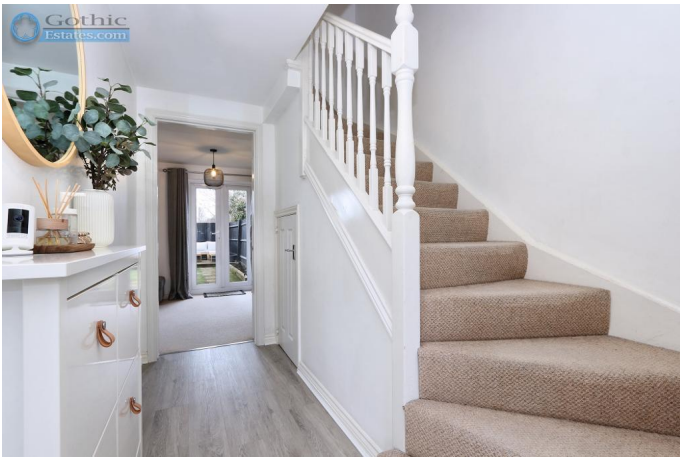
Council tax band D

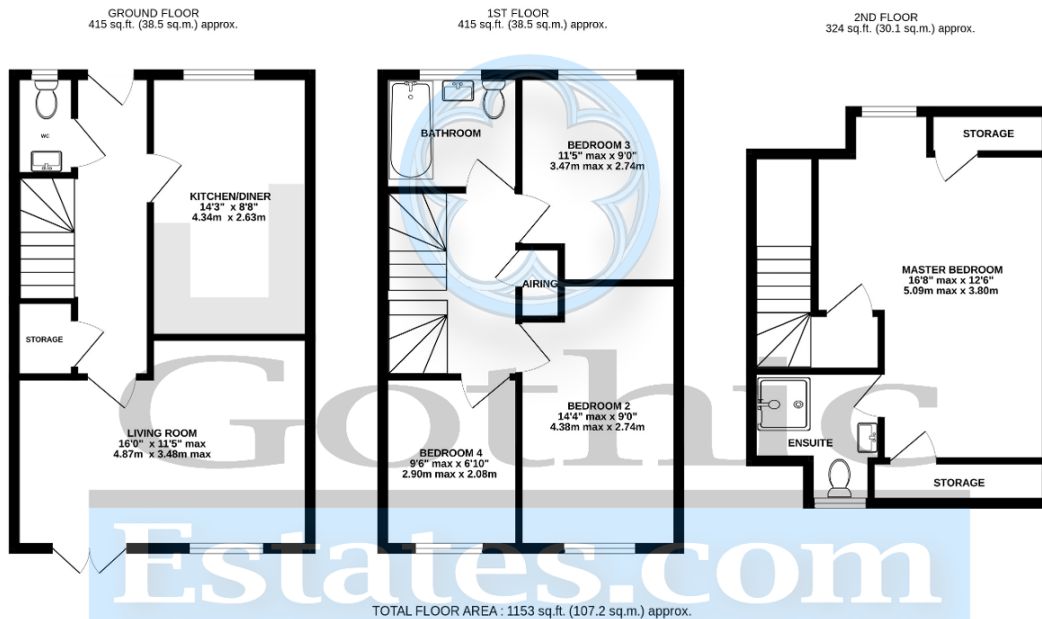
EPC commissioned TBA

Location

Arlesey is a large, growing village just North of the Beds/Herts border, surrounded by countryside yet within easy reach of the A507 and A1(M). The village offers a range of local shopping, pubs and food outlets and significantly a Mainline Railway station with direct travel to London St. Pancras in under 40 minutes. Dating back as long as the 1086 Domesday Book, there is a broad range of home styles and building eras - something for everyone! Gothic Mede Academy provides Primary education in the middle of the village, with numerous Secondary options including Etonbury Academy on the Arlesey/Stotfold border. Further facilities and shopping are available within a few miles in the larger towns of Letchworth Garden City and Hitchin to the South.







Whilst every attempt has been made to ensure the accuracy of the floorplan contained here, measurements of doors, windows, rooms and any other items are approximate and no responsibility is taken for any error, omission or mis-statement. This plan is for illustrative purposes only and should be used as such by any prospective purchaser. The services, systems and appliances shown have not been tested and no guarantee as to their operability or efficiency can be given.
Made with Metropix ©2023

Energy Efficiency

